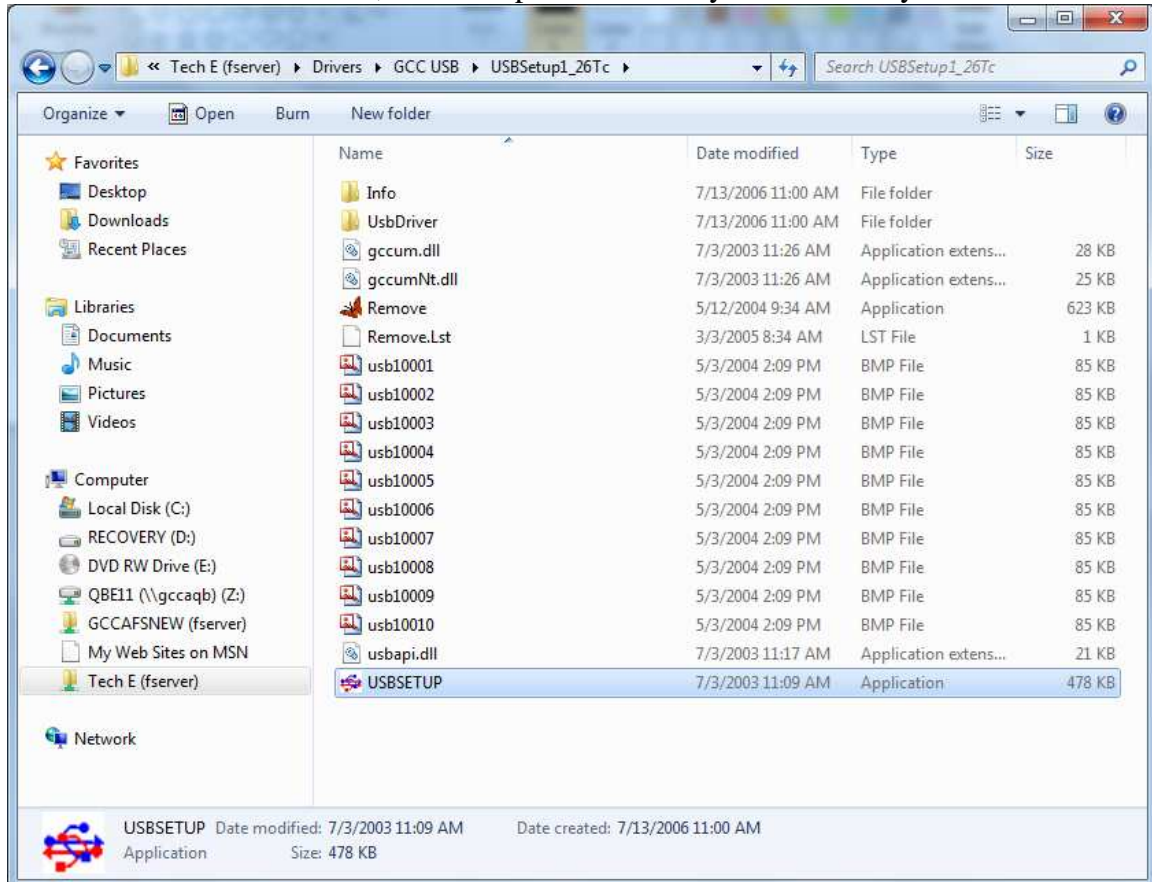
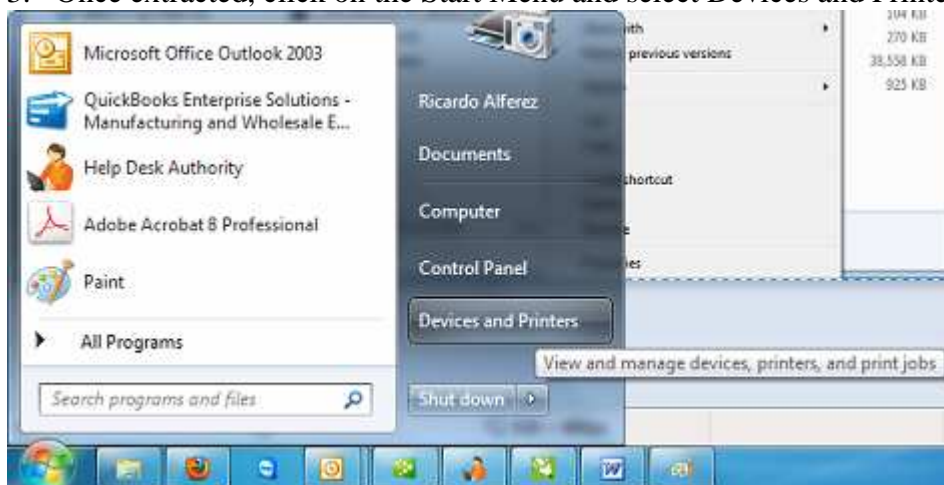


How to Install 32bit Drivers:

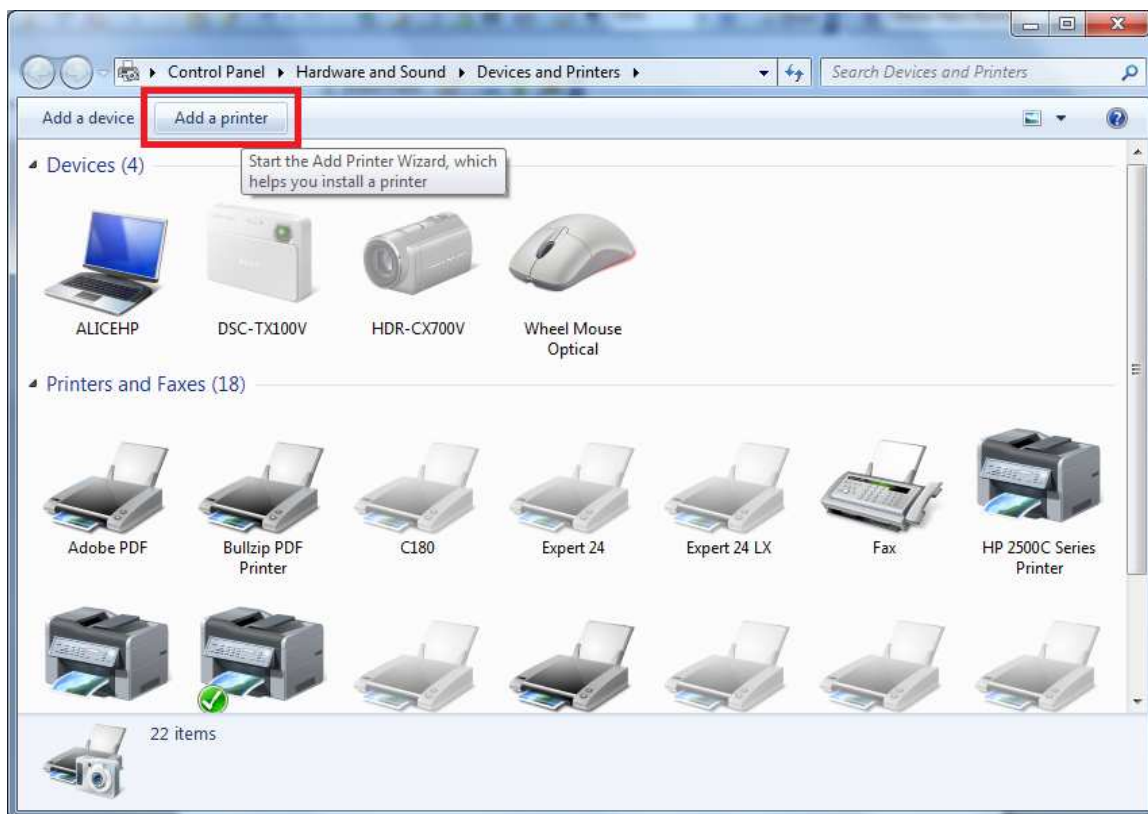
1. Disconnect all USB devices.
2. Run the USBSETUP.exe, once completed connect your device to your PC:



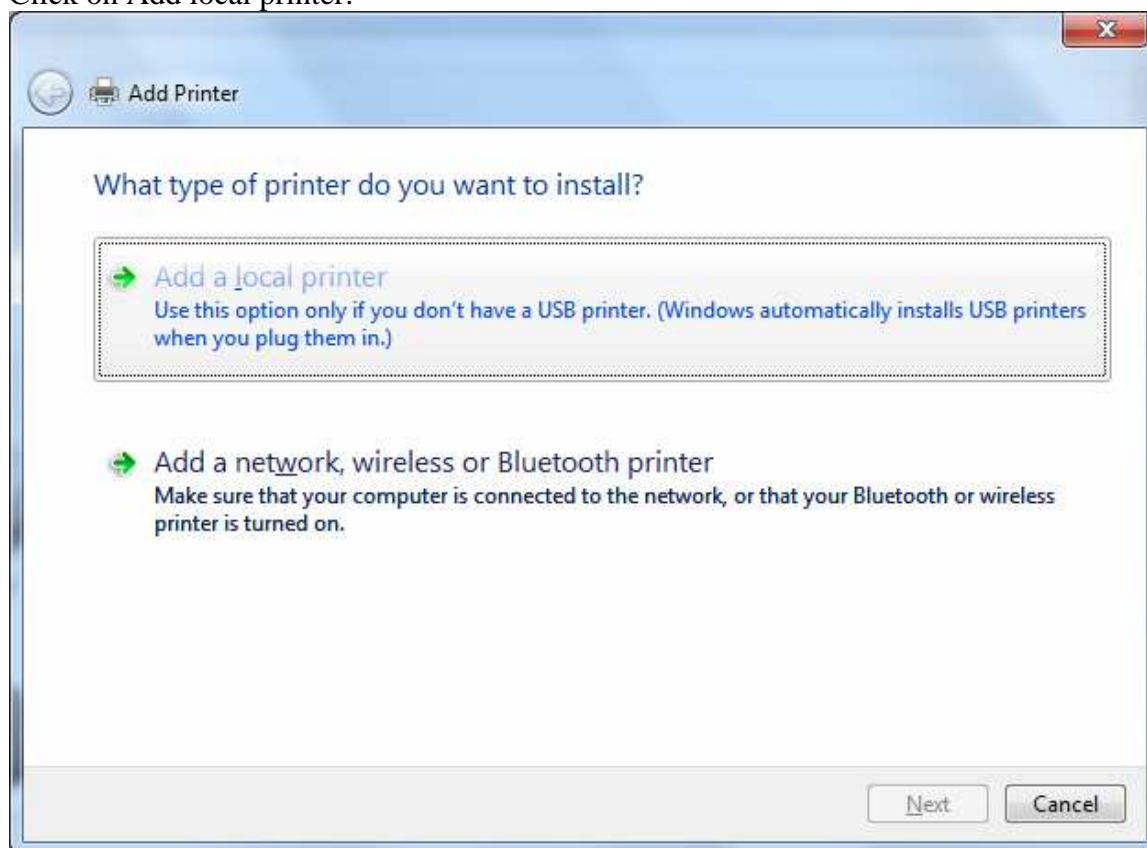
3. Once extracted, click on the Start Menu and select Devices and Printers.



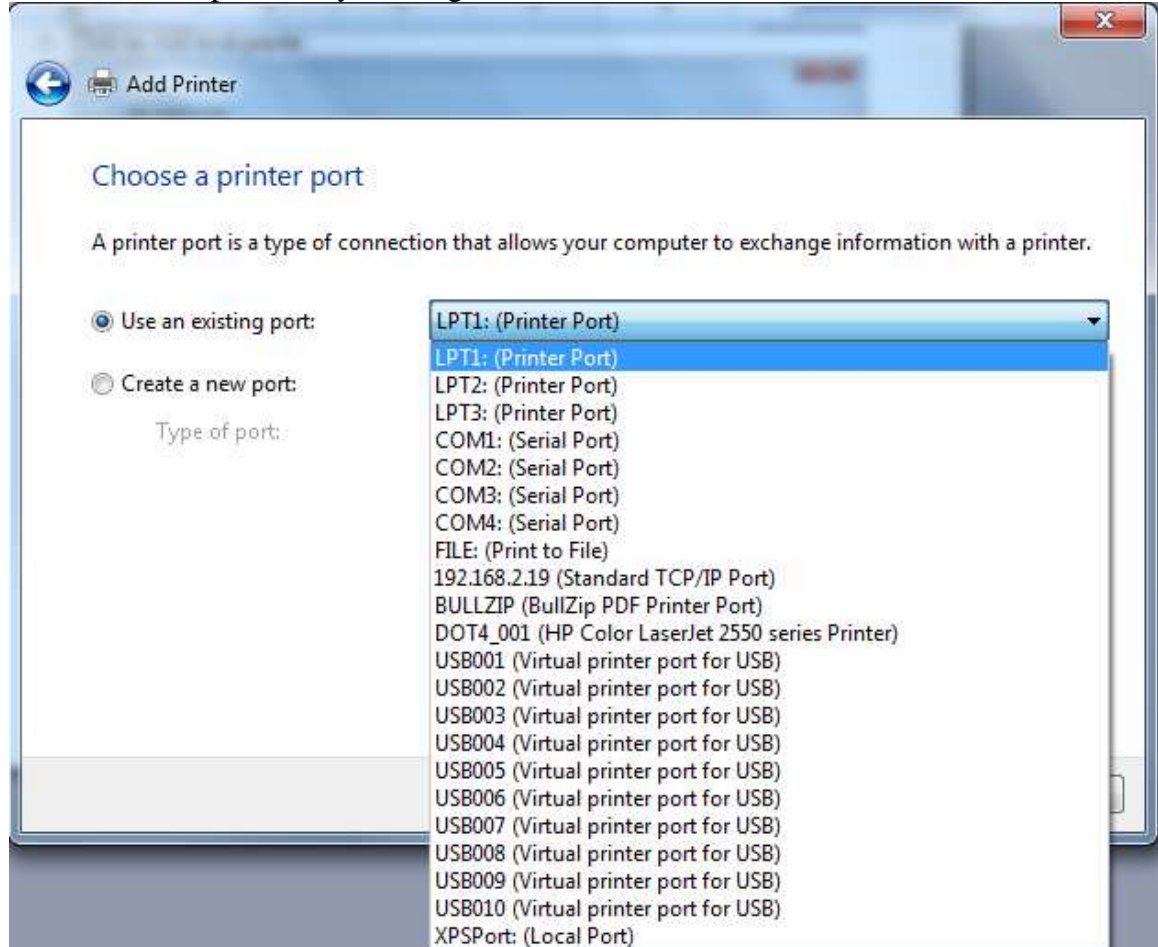
4. Click on Add Printer:



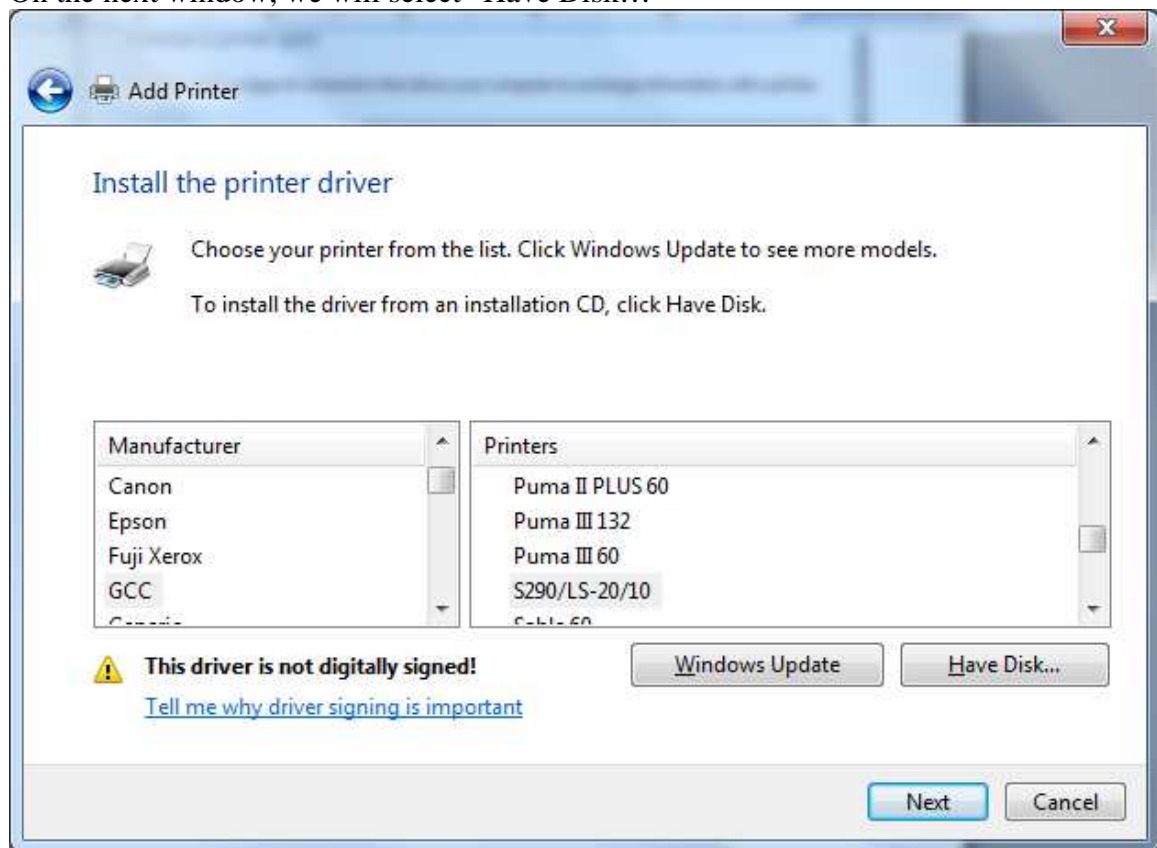
5. Click on Add local printer:



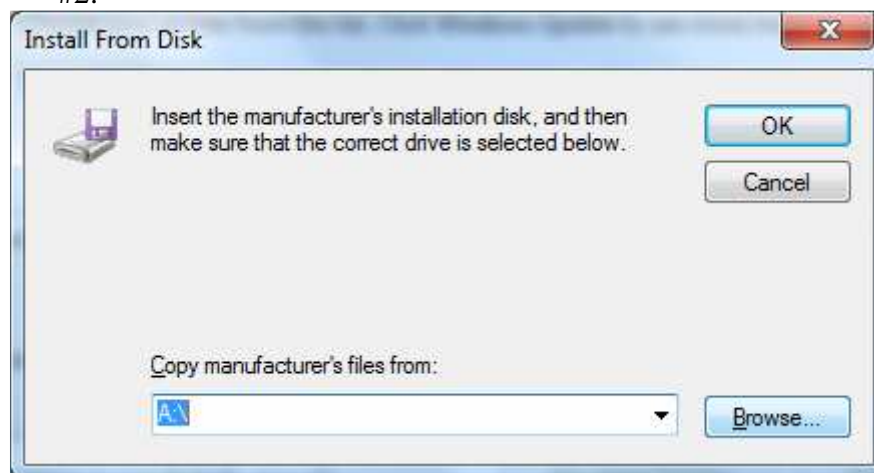
6. On the following window, select the last USBXXX port if you're using a USB connection and proceed by clicking Next:



7. On the next window, we will select “Have Disk...”

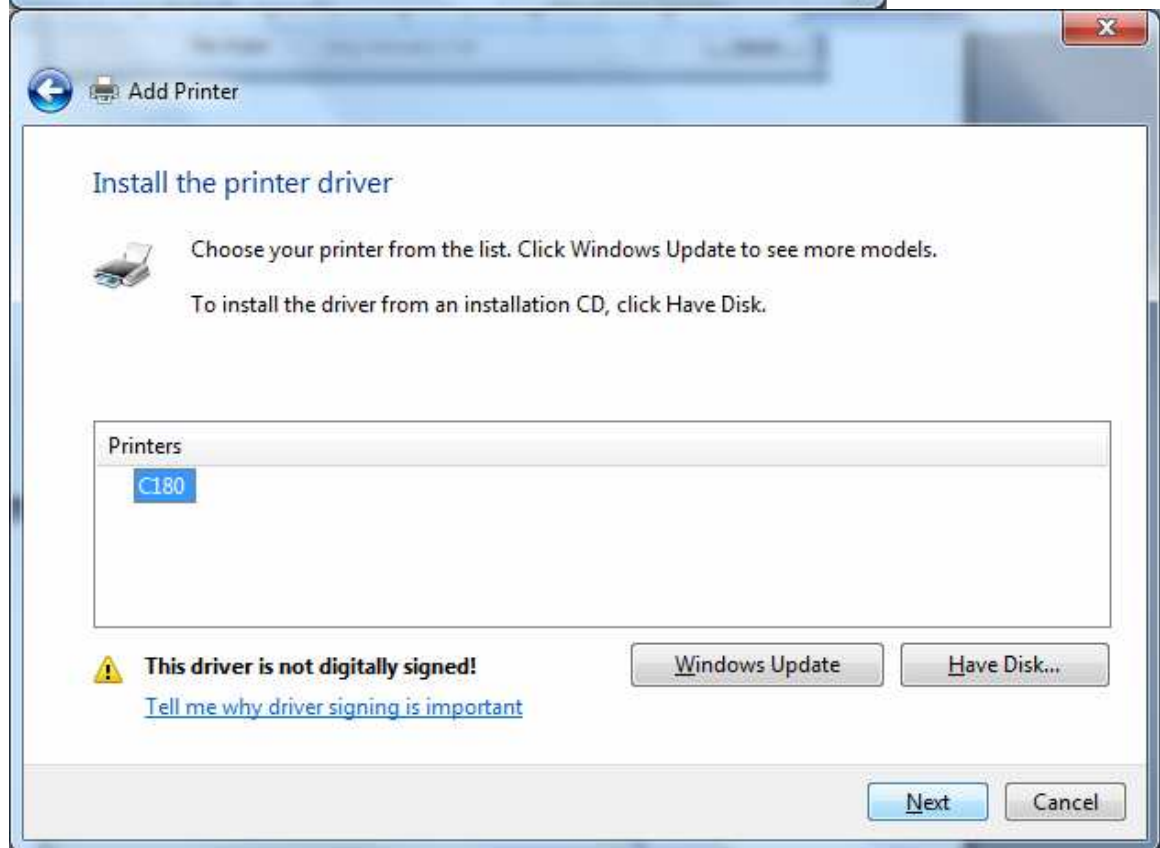
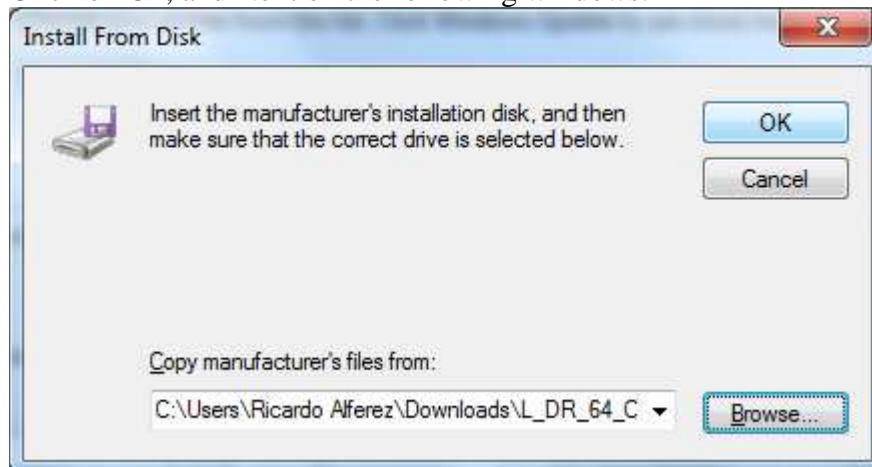


8. We will select “Browse” and find our drivers folder that we extracted from step #2:

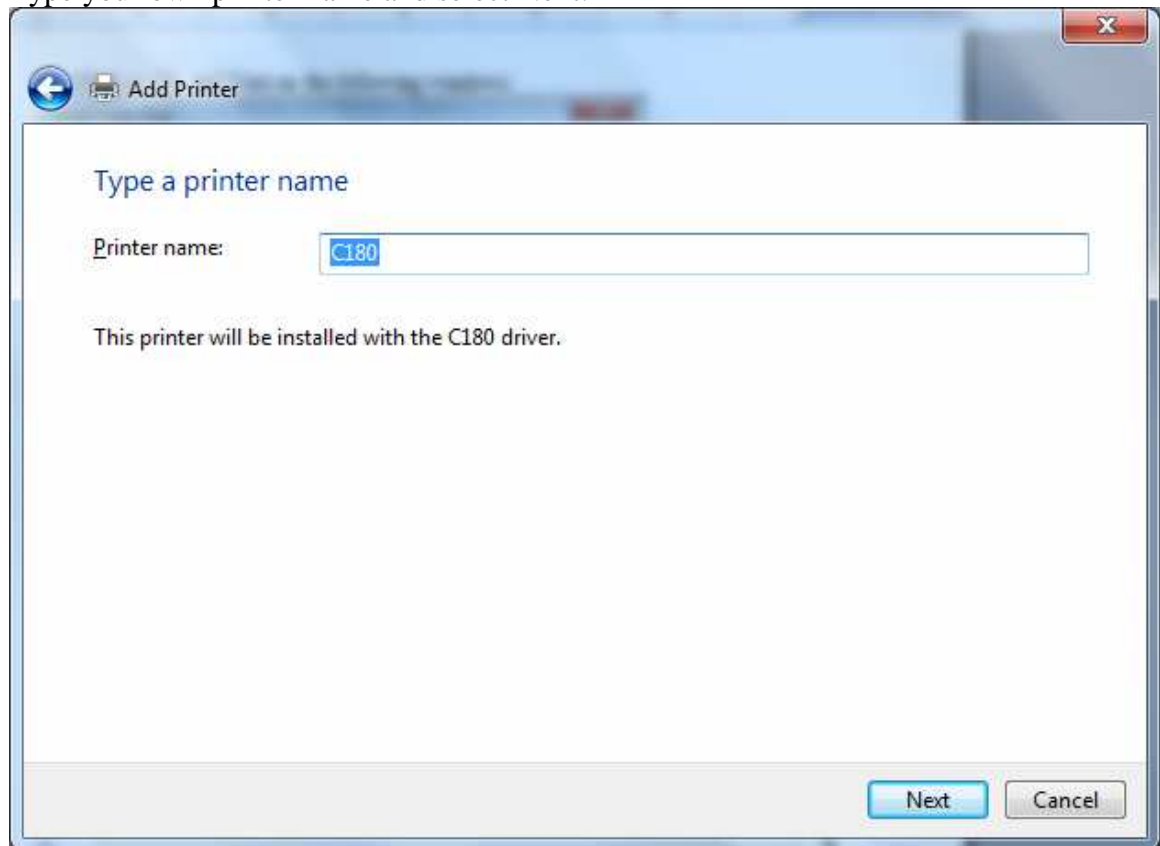




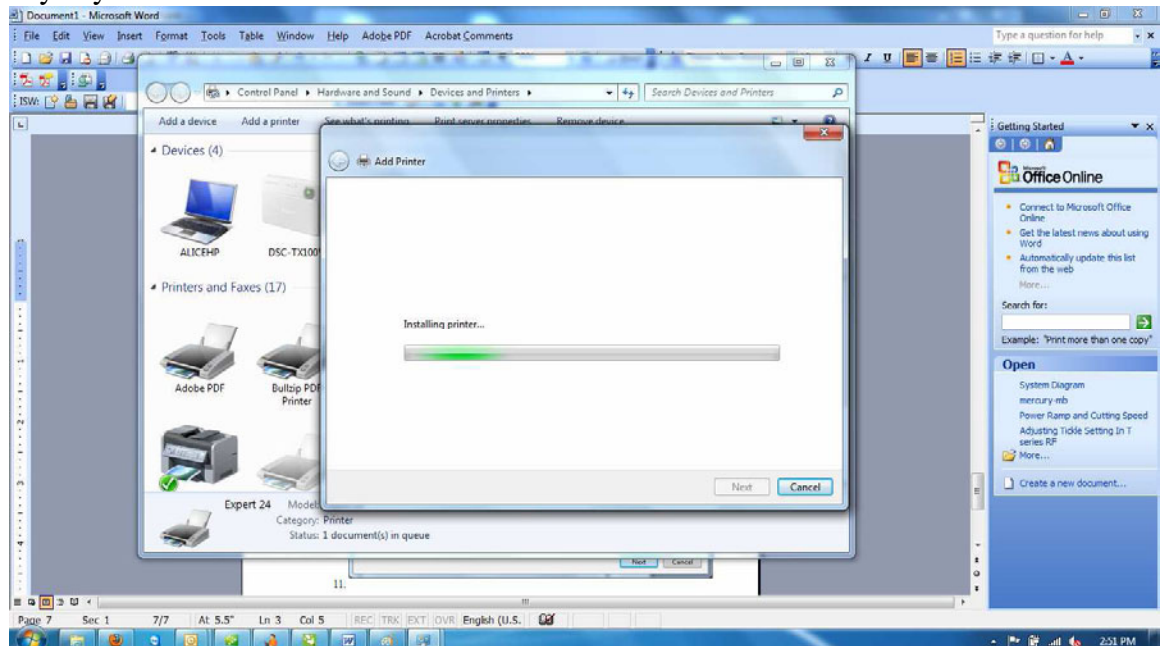
9. Click on Ok, and Next on the following windows:



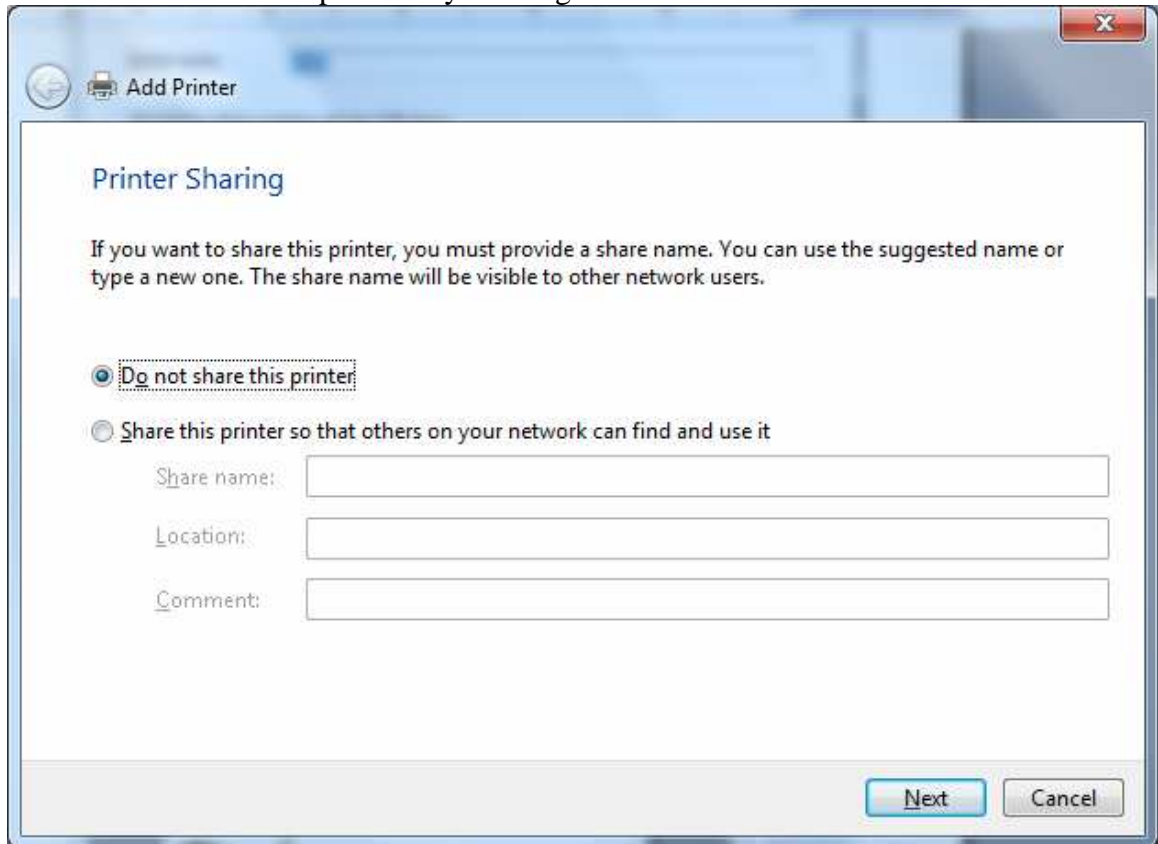
10. Type your own printer name and select Next:



11. You will then proceed with the “installing driver...” window. There will be an additional window asking if you’d like to install the driver. Select “Install anyway”



12. Select Do not share and proceed by clicking Next:



Add Printer

Printer Sharing

If you want to share this printer, you must provide a share name. You can use the suggested name or type a new one. The share name will be visible to other network users.

☒ **Do not share this printer**

☐ Share this printer so that others on your network can find and use it

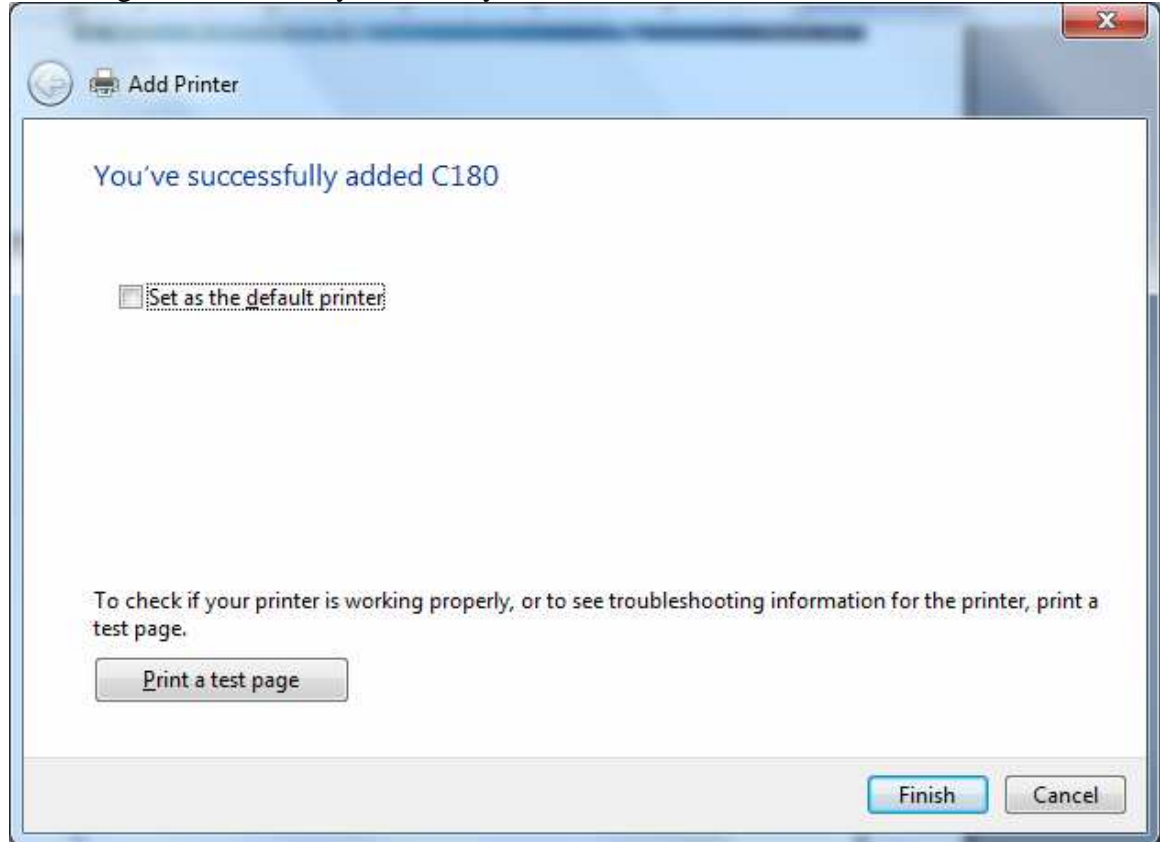
Share name:

Location:

Comment:

Next **Cancel**

13. If you'd like to setup this machine as your default printer you may do so on the following window. Once you're ready click "Finish":



14. Refresh your Devices and Printers window to display the C180.
15. Congratulations! You're now ready to begin engraving on your C180!