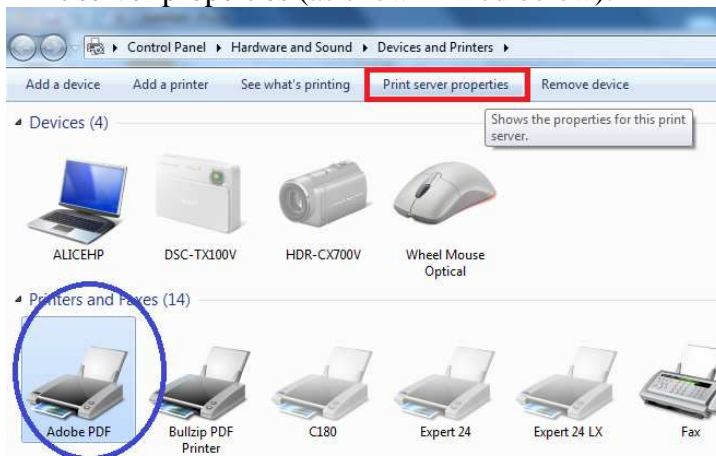


How to Remove Previous Drivers Installed on your PC

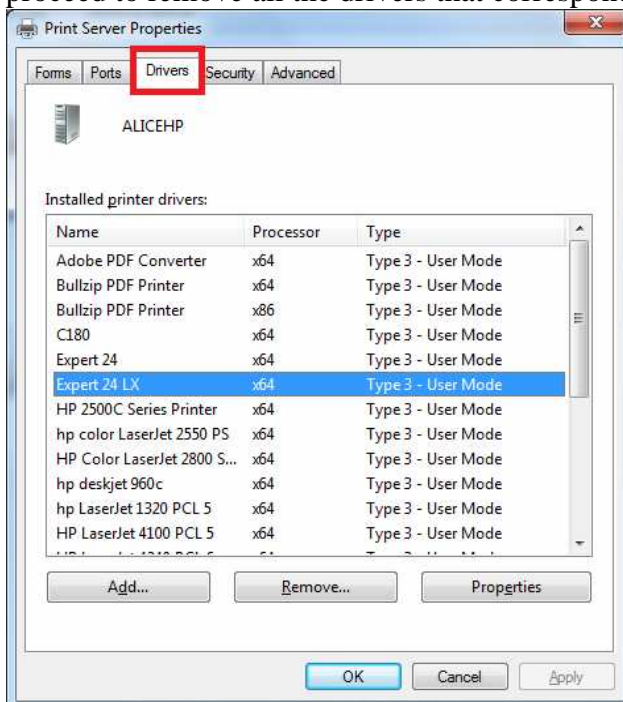
1. Go to the Start menu and go to Devices and Printers as shown on the image below:



2. Select to highlight any printer (as shown in blue below) and then select the option Print server properties (as shown in red below):

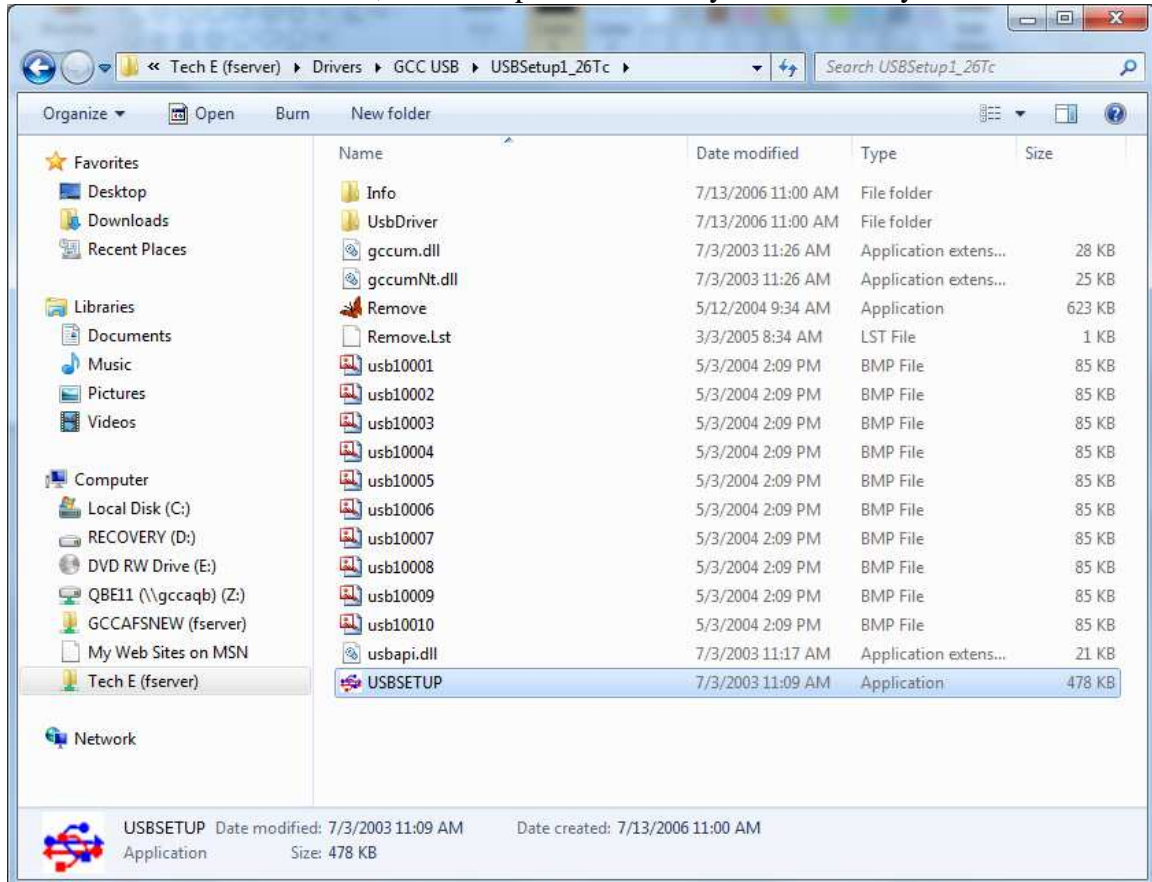


3. Once the Printer Server Properties window appears select the Drivers tab and then proceed to remove all the drivers that correspond to the machine.



How to Install 32bit Drivers:

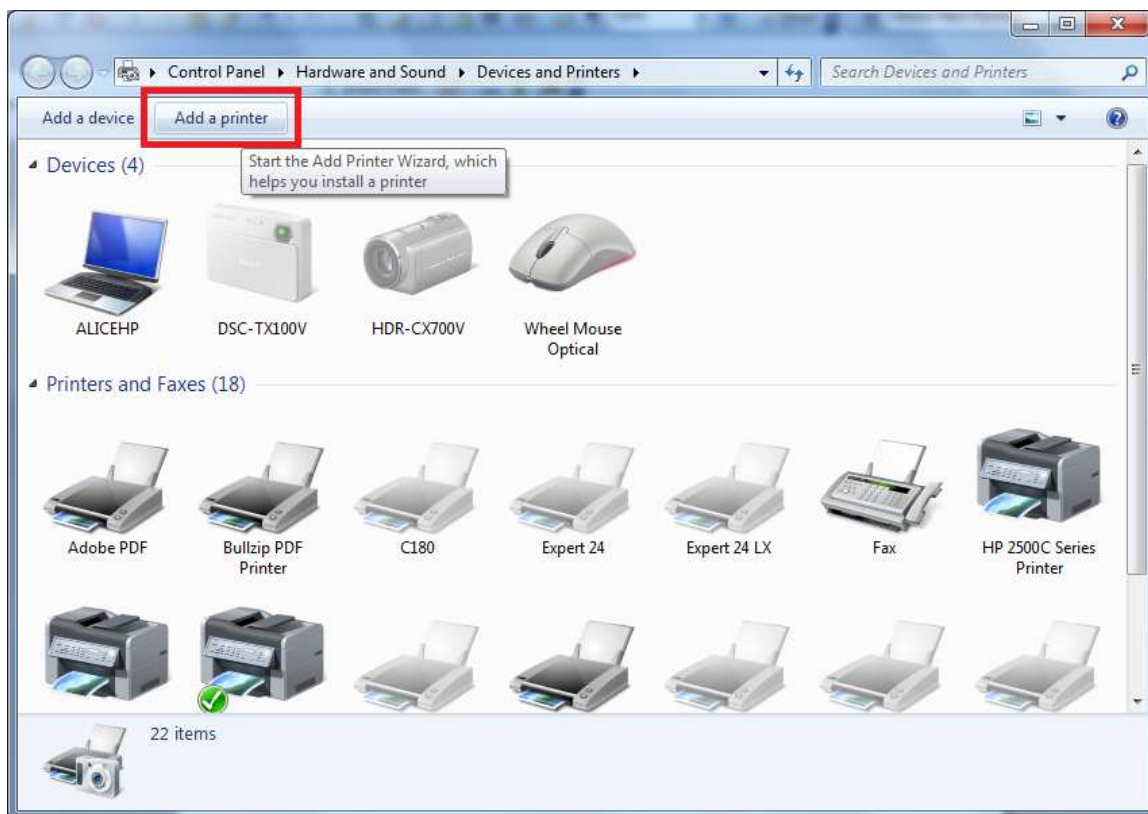
1. Disconnect all USB devices.
2. Run the USBSETUP.exe, once completed connect your device to your PC:



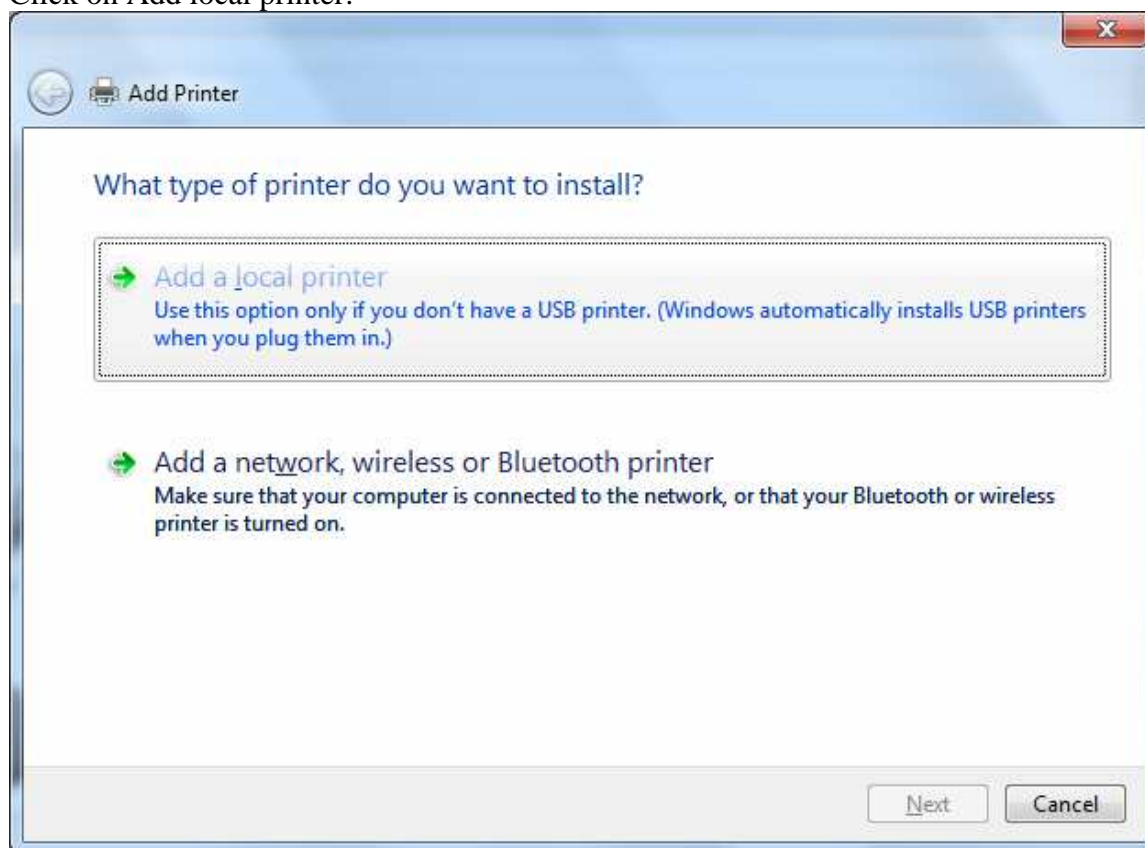
3. Once extracted, click on the Start Menu and select Devices and Printers.



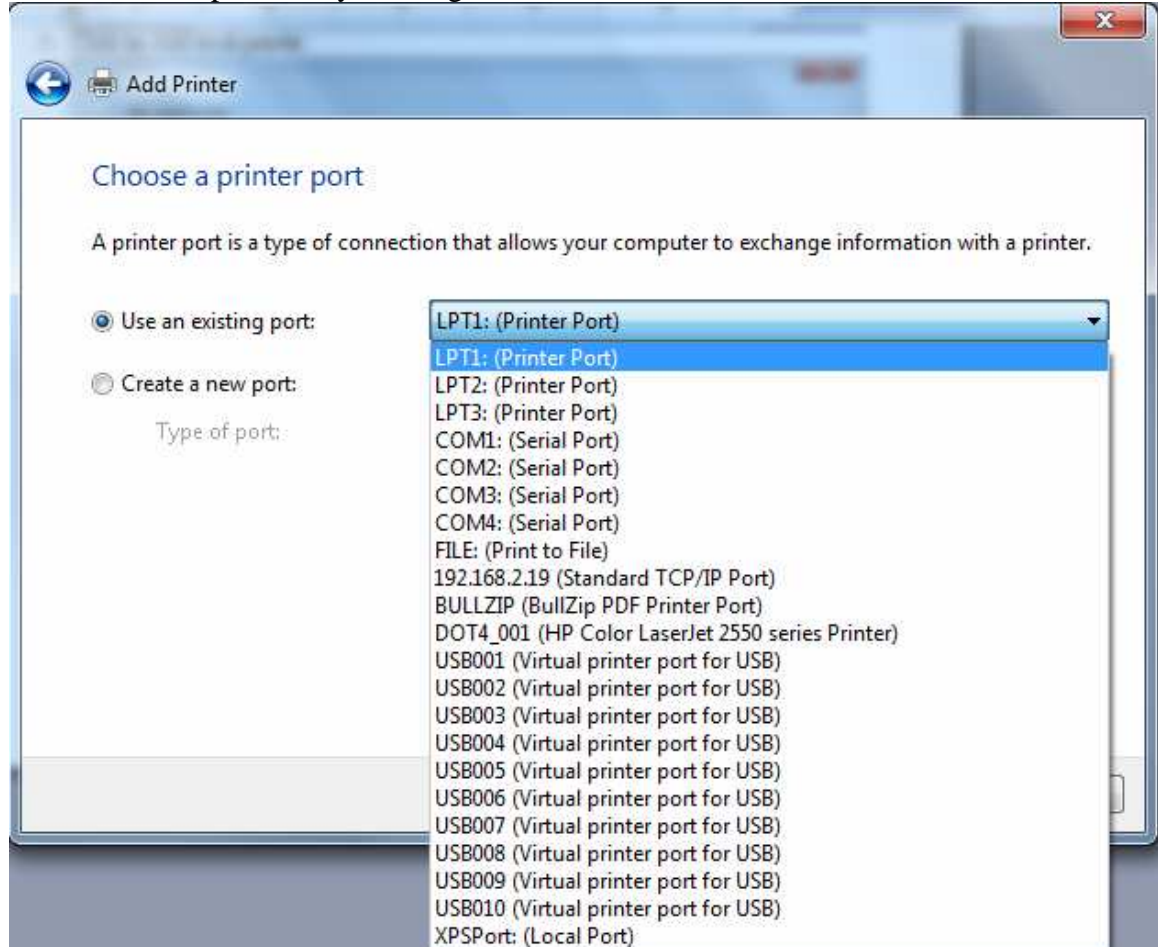
4. Click on Add Printer:



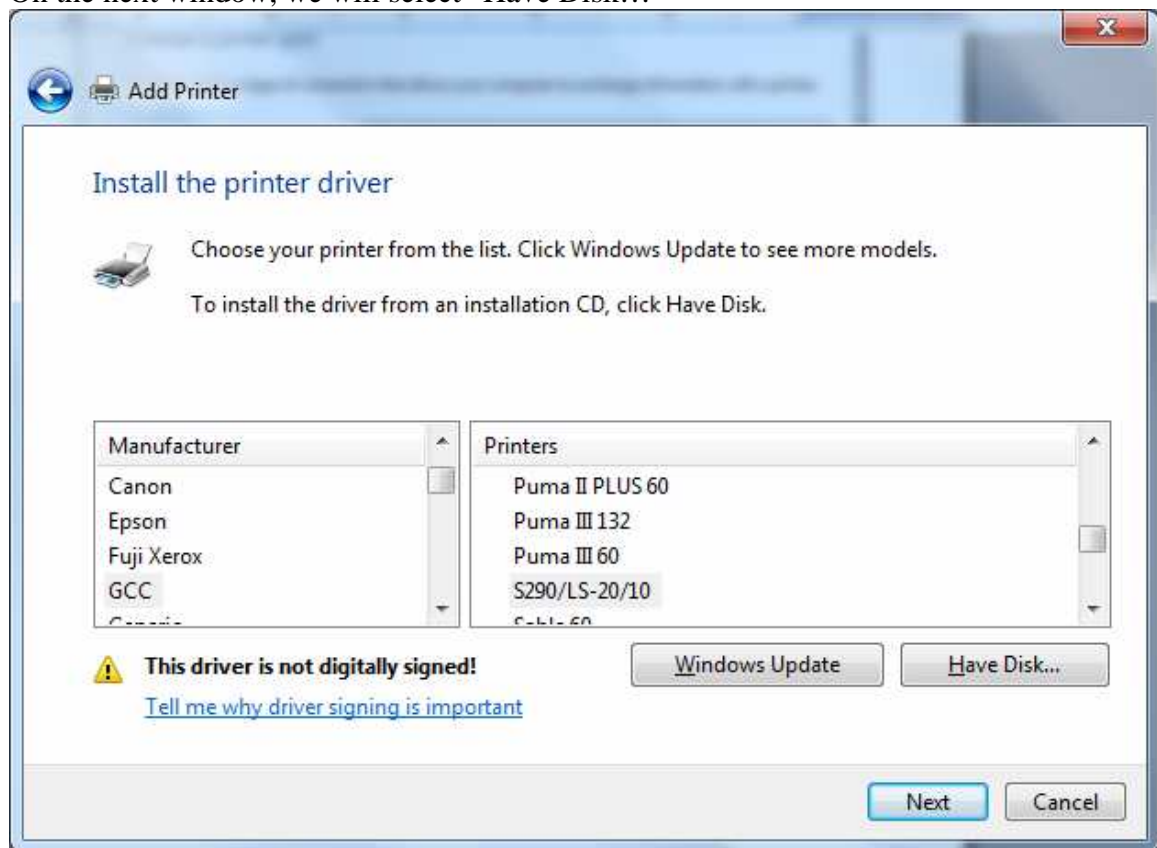
5. Click on Add local printer:



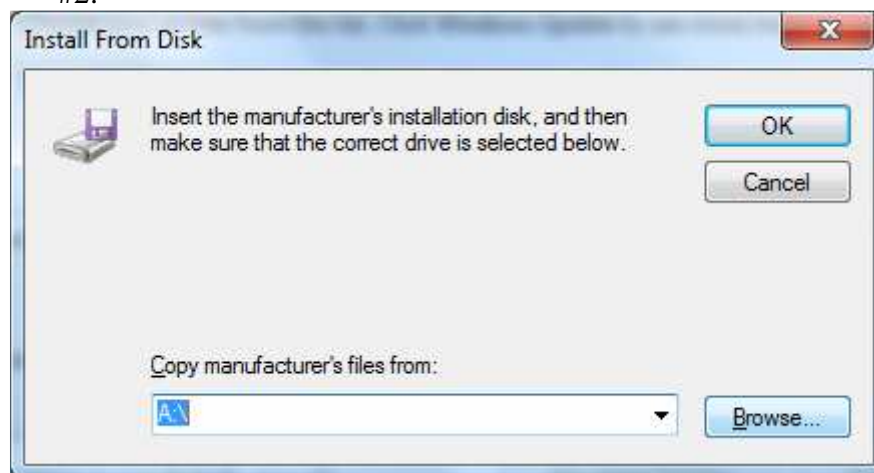
6. On the following window, select the last USBXXX port if you're using a USB connection and proceed by clicking Next:



7. On the next window, we will select “Have Disk...”

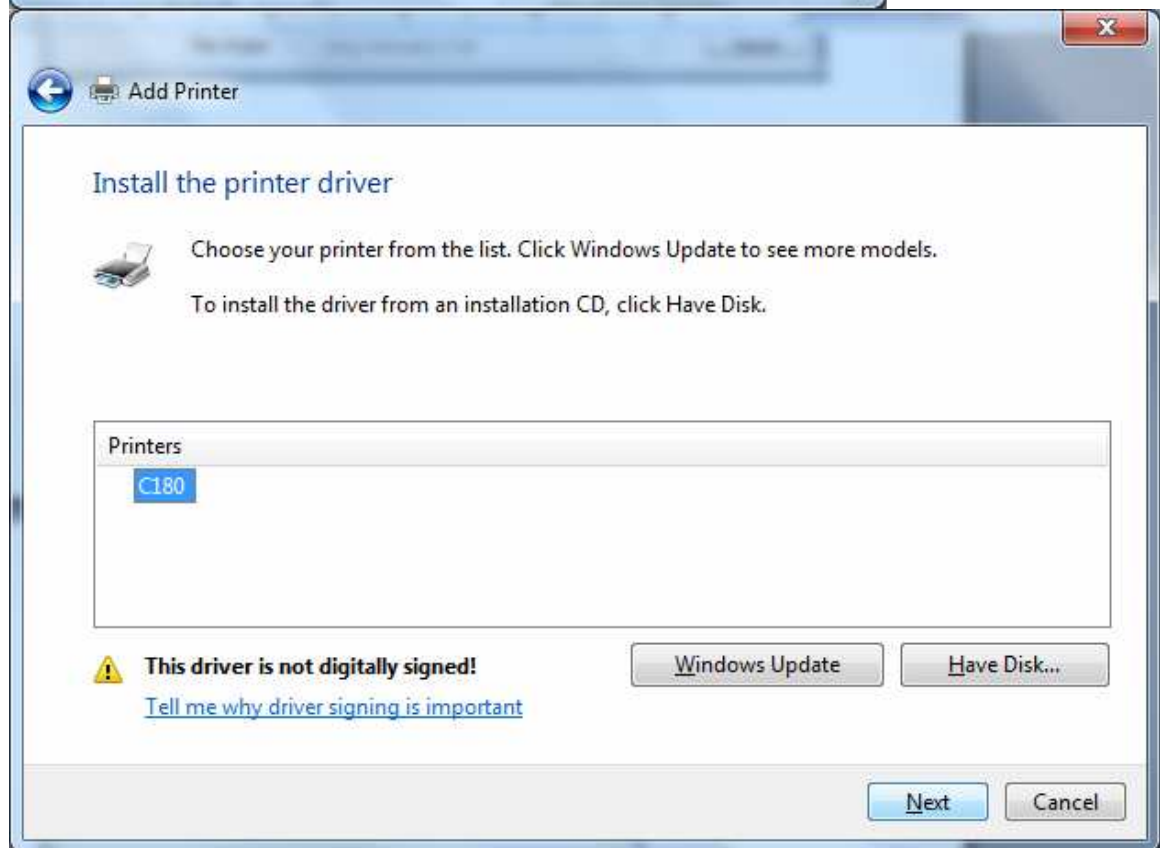
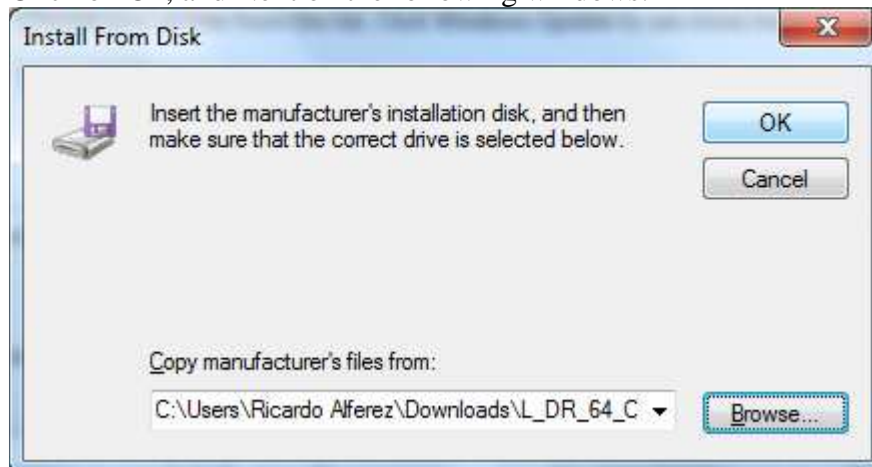


8. We will select “Browse” and find our drivers folder that we extracted from step #2:

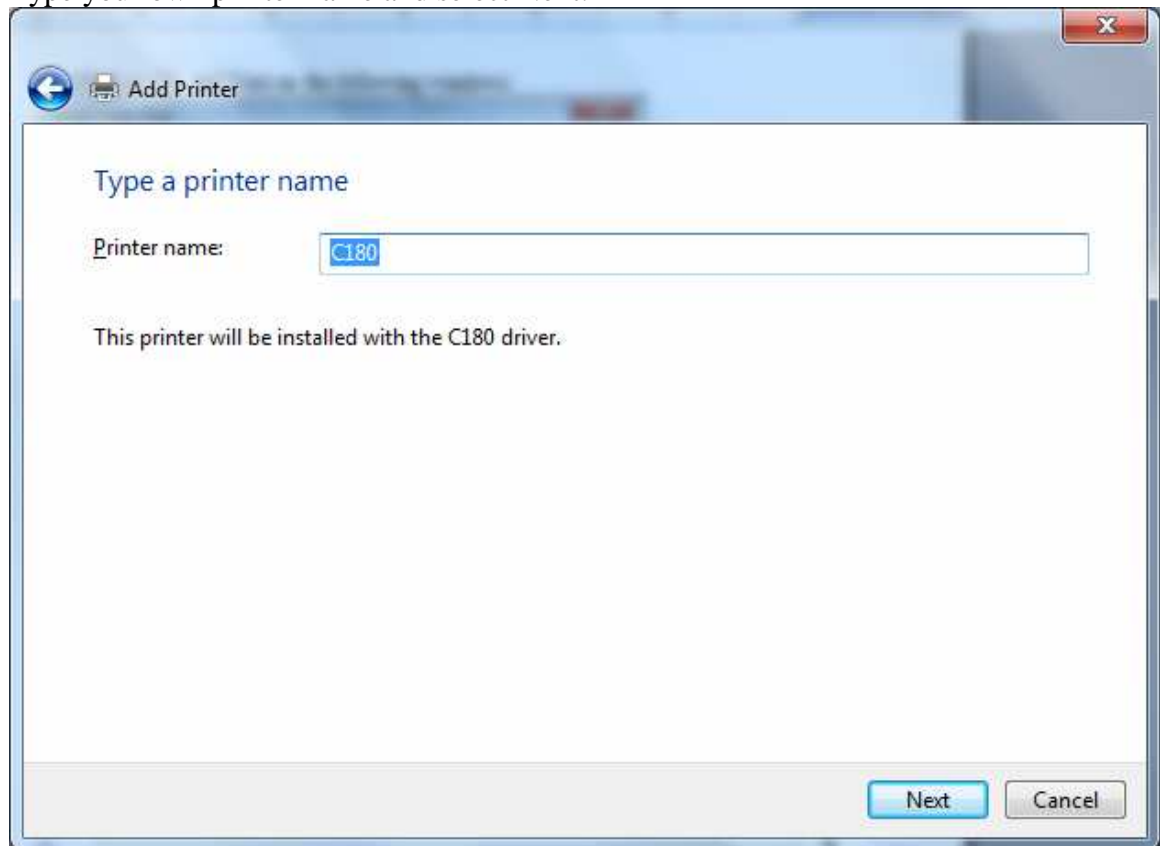




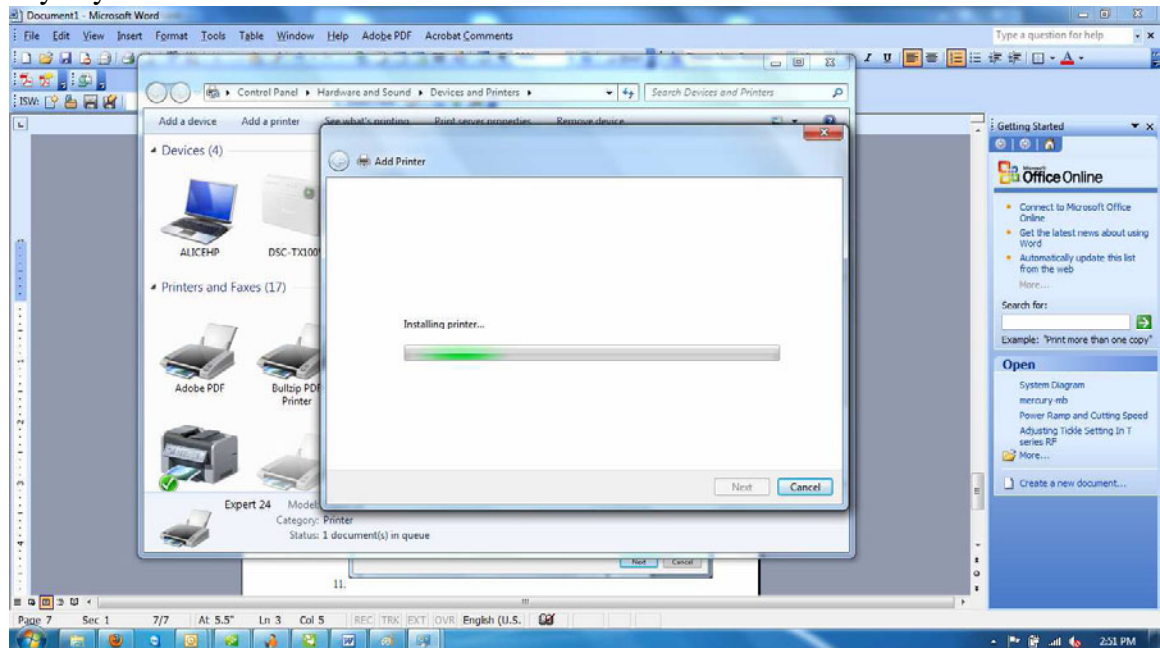
9. Click on Ok, and Next on the following windows:



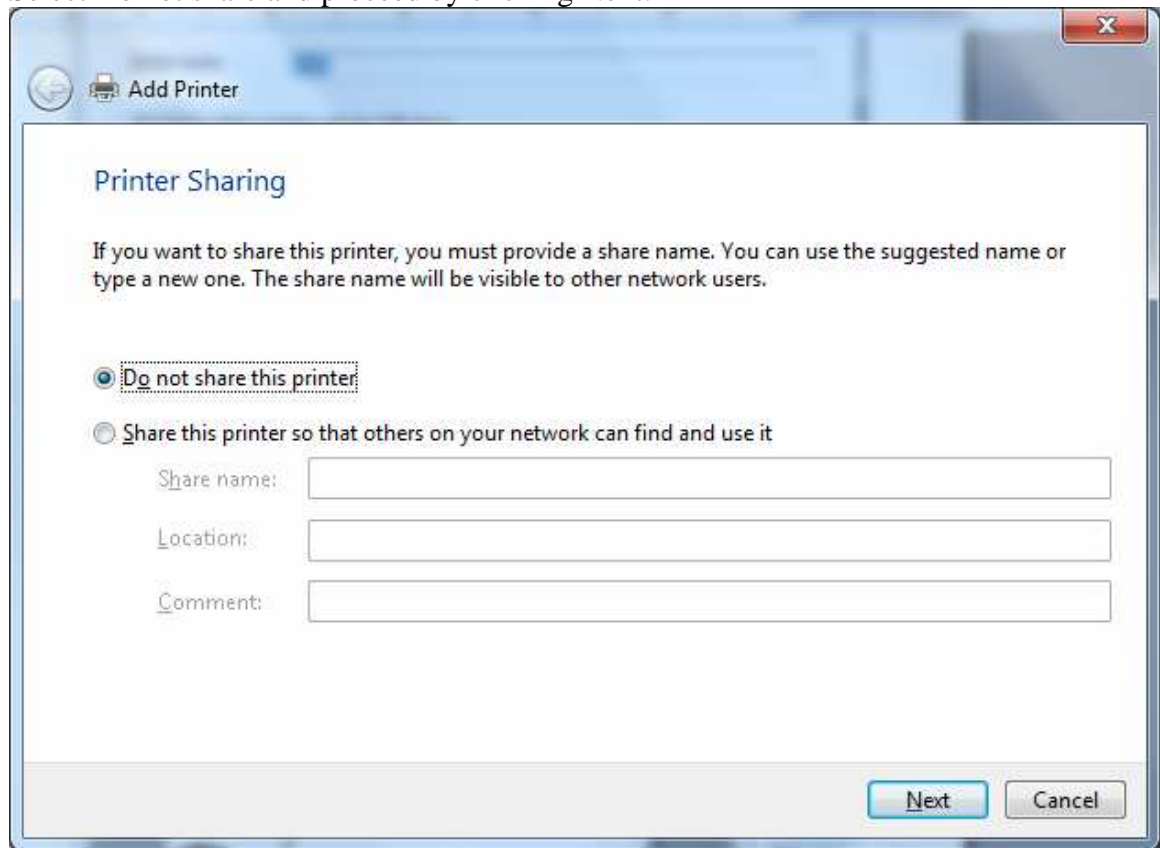
10. Type your own printer name and select Next:



11. You will then proceed with the “installing driver...” window. There will be an additional window asking if you’d like to install the driver. Select “Install anyway”

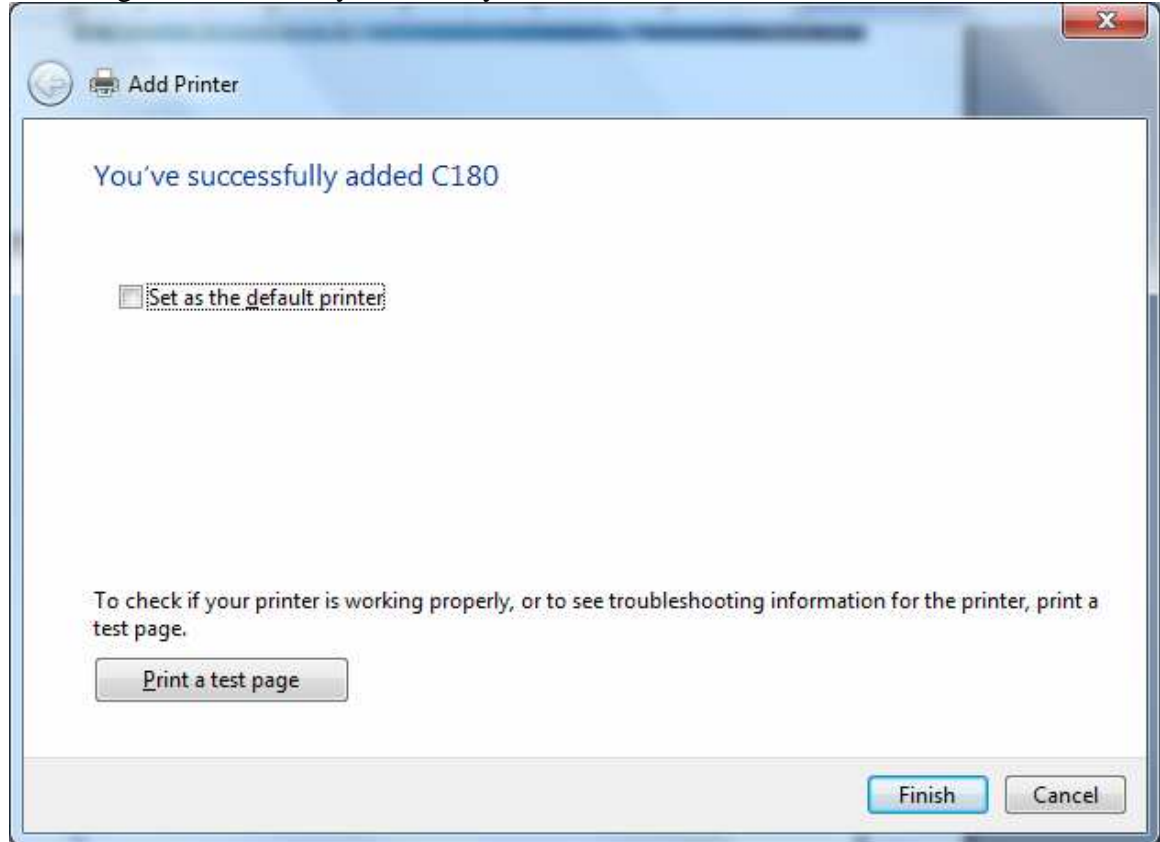


12. Select Do not share and proceed by clicking Next:



The screenshot shows the 'Add Printer' window in Windows. The title bar says 'Add Printer'. The main heading is 'Printer Sharing'. Below the heading, there is a text block: 'If you want to share this printer, you must provide a share name. You can use the suggested name or type a new one. The share name will be visible to other network users.' There are two radio buttons: the first is 'Do not share this printer' and it is selected; the second is 'Share this printer so that others on your network can find and use it'. Below the second radio button, there are three text input fields labeled 'Share name:', 'Location:', and 'Comment:'. At the bottom right, there are two buttons: 'Next' (which is highlighted with a blue border) and 'Cancel'.

13. If you'd like to setup this machine as your default printer you may do so on the following window. Once you're ready click "Finish":



14. Refresh your Devices and Printers window to display the C180.
15. Congratulations! You're now ready to begin engraving on your C180!